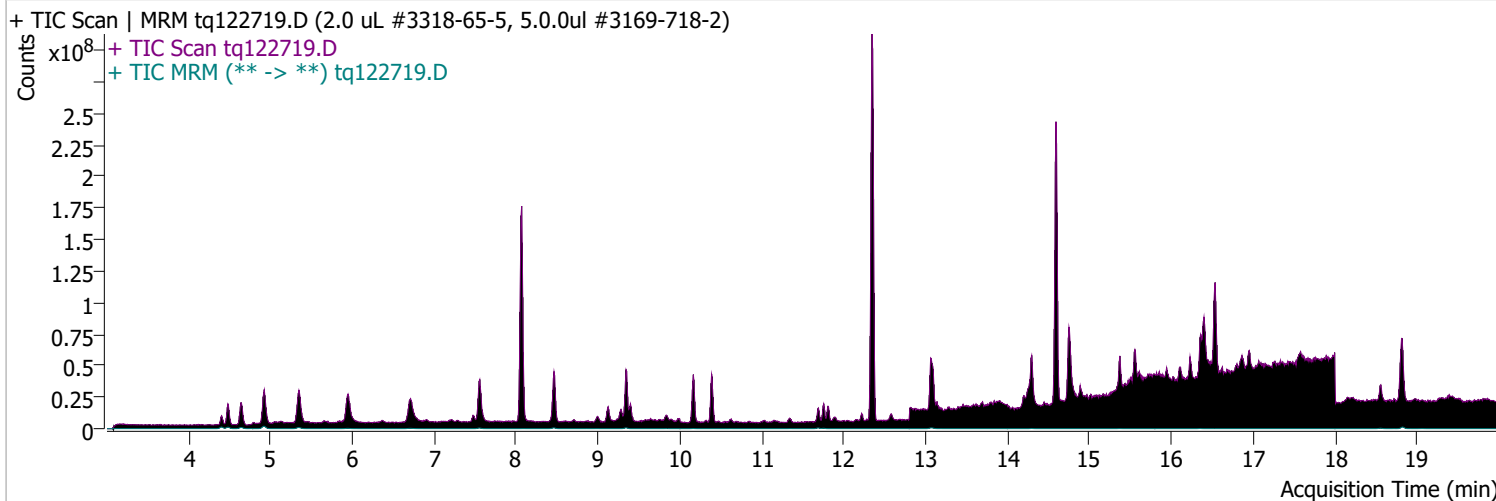


Quantitative Analysis Sample Report

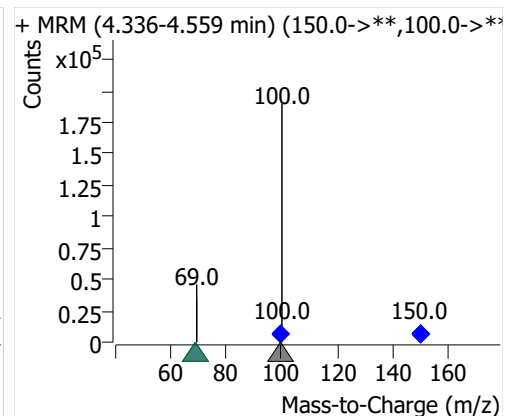
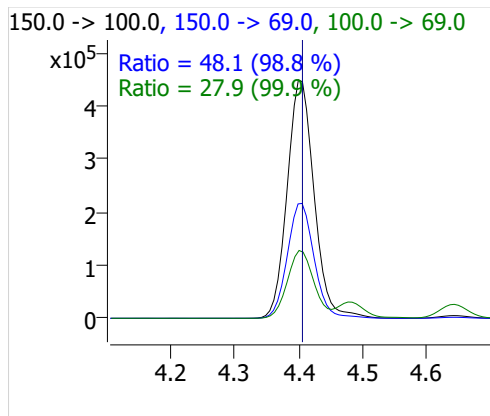
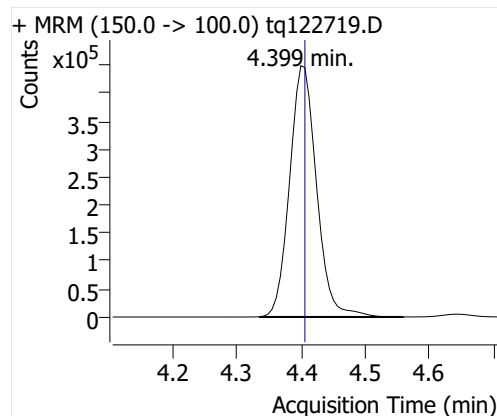
Batch Path	D:\MassHunter\GCMS\1\data\27dec22a\QuantResults\tq22m1227a.batch.bin		
Analysis Time	1/3/2023 2:39 PM	Analyst Name	TAI\us32_usr_ins22923
Report Time	1/5/2023 3:17:24 PM	Reporter Name	TAI\us32_usr_ins22923
Last Calib Update	1/3/2023 2:39 PM	Batch State	Processed
Quant Batch Version	10.1	Quant Report Version	10.1
Acq. Time	12/27/2022 4:33 PM	Data File	tq122719.D
Sample Type	Cal	Sample Name	2.0 uL #3318-65-5, 5.0.0ul #3169-718-2
Dilution	1	Acq. Method	tq22m1209

Sample Chromatogram

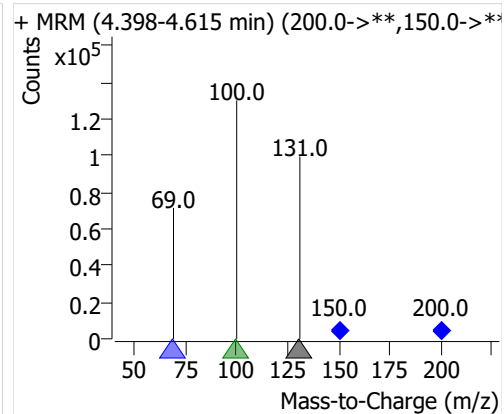
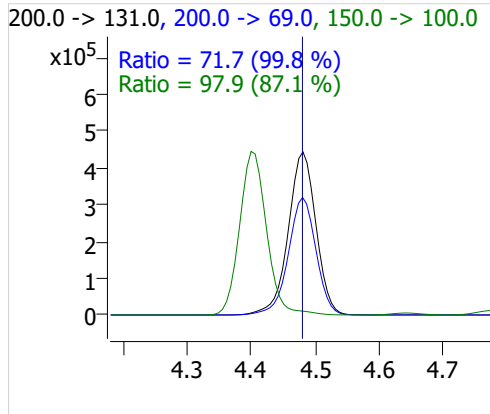
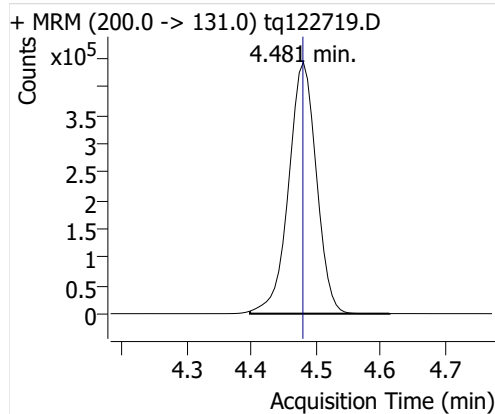


Compound	ISTD	RT	Resp.	ISTD Resp.	Resp. Ratio	Final Conc	Units
PFBA	6:2 FTOH-C13	4.399	1310874	43270	30.2953	9.0408	ng
PFPeA	6:2 FTOH-C13	4.481	1329875	43270	30.7344	10.3378	ng
PFHxA	6:2 FTOH-C13	4.639	620454	43270	14.3392	10.3578	ng
PFHpA	6:2 FTOH-C13	4.920	413734	43270	9.5617	10.1284	ng
PFOA	6:2 FTOH-C13	5.348	250079	43270	5.7795	9.5761	ng
4:2 FTOH	6:2 FTOH-C13	11.688	208650	43270	4.8220	10.2459	ng
5:2sFTOH	6:2 FTOH-C13	11.757	103876	43270	2.4007	10.1299	ng
7:2sFTOH	6:2 FTOH-C13	13.064	223559	43270	5.1666	10.0593	ng
6:2 FTOH	6:2 FTOH-C13	13.090	405454	43270	9.3703	10.2336	ng
8:2 FTOH-C13	6:2 FTOH-C13	14.293	17375	43270	0.4015	1.0309	ng
8:2 FTOH	6:2 FTOH-C13	14.300	121185	43270	2.8007	10.7922	ng
10:2 FTOH	6:2 FTOH-C13	15.370	45028	43270	1.0406	9.5468	ng
12:2 FTOH	6:2 FTOH-C13	16.357	181182	43270	4.1873	10.0142	ng
NMeFOSA	6:2 FTOH-C13	18.830	648919	43270	14.9970	9.4176	ng
NEtFOSA	6:2 FTOH-C13	18.831	592338	43270	13.6894	9.4971	ng

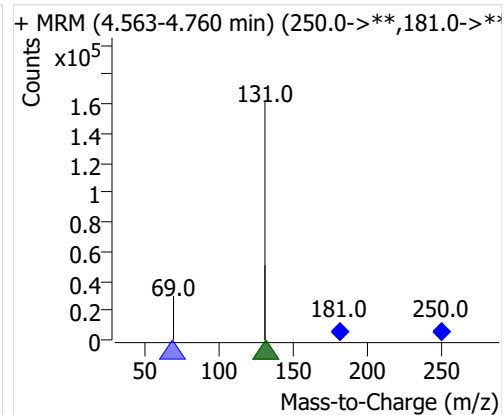
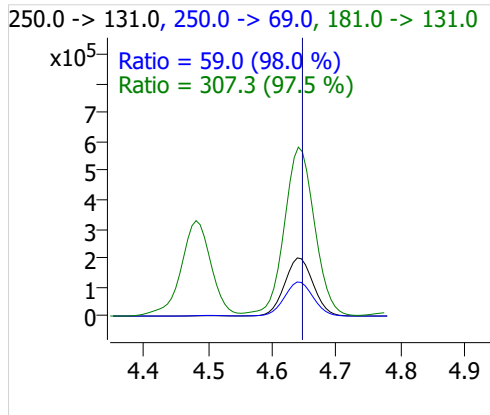
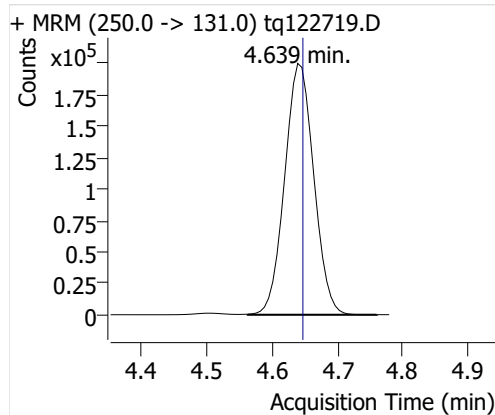
PFBA



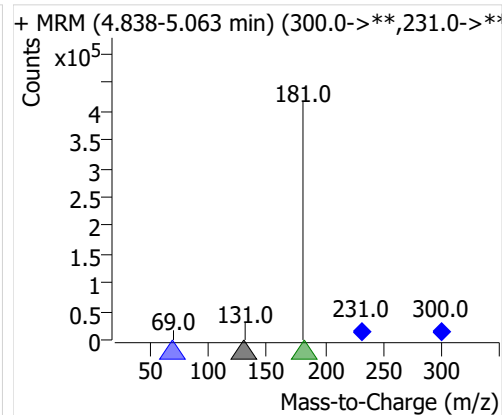
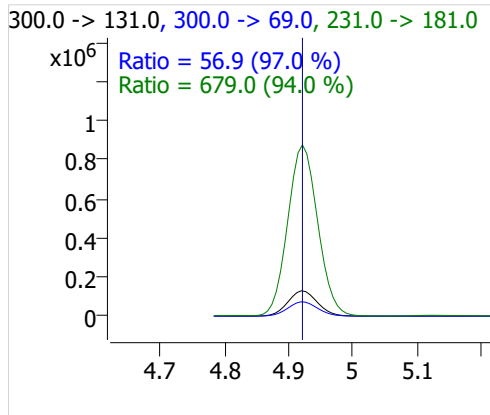
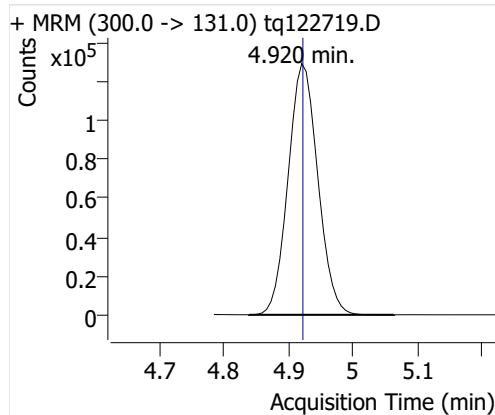
PFPeA



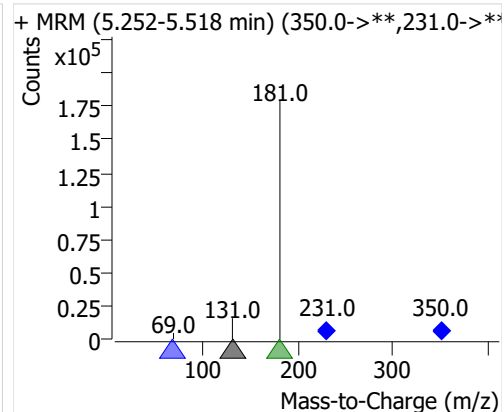
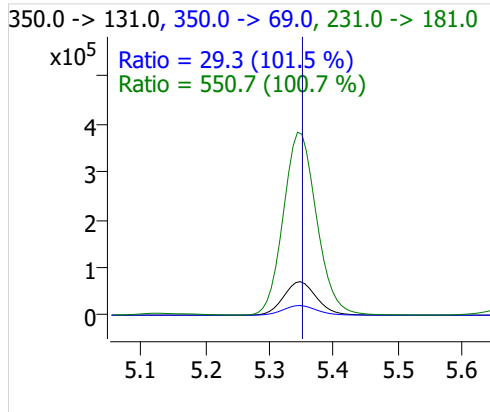
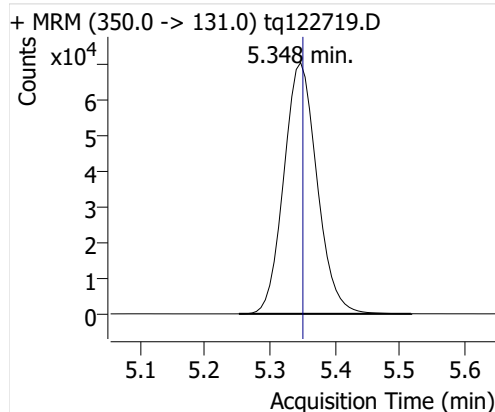
PFHxA



PFHpA

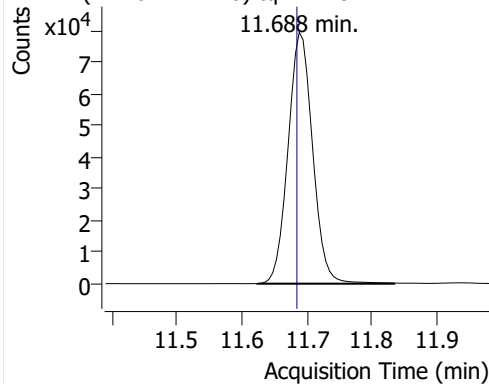


PFOA

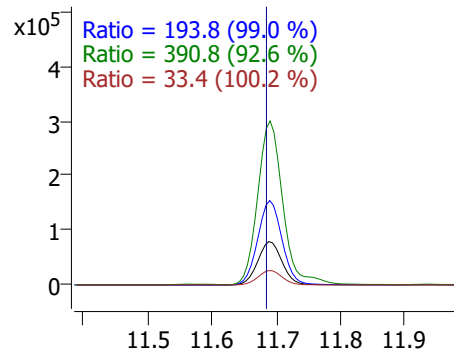


4:2 FTOH

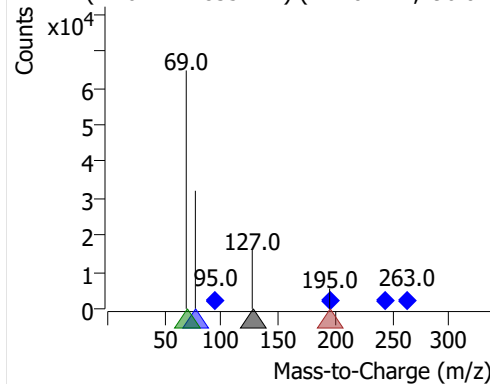
+ MRM (244.0 -> 127.0) tq122719.D



244.0 -> 127.0, 196.0 -> 77.0, 95.0 -> 69.0, 263.0 -> 127.0

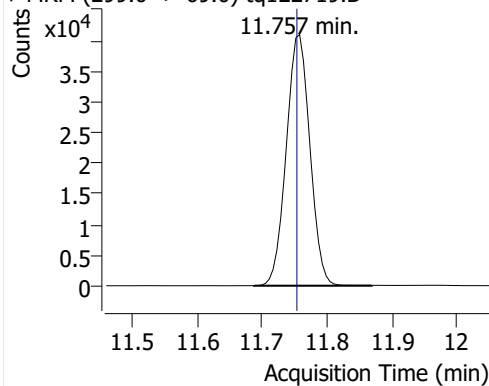


+ MRM (11.624-11.835 min) (244.0->**,196.0->127.0)

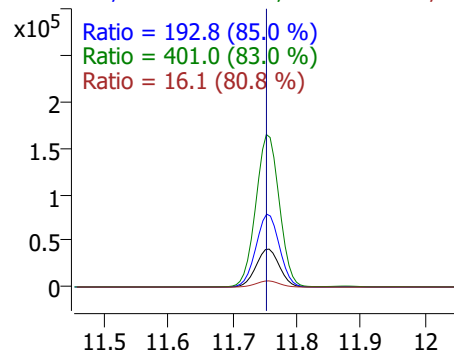


5:2sFTOH

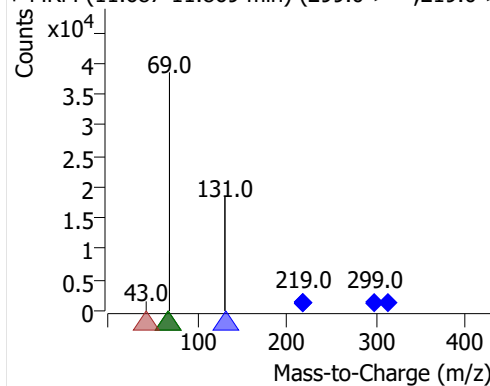
+ MRM (299.0 -> 69.0) tq122719.D



299.0 -> 69.0, 219.0 -> 131.0, 219.0 -> 69.0, 319.0 -> 131.0

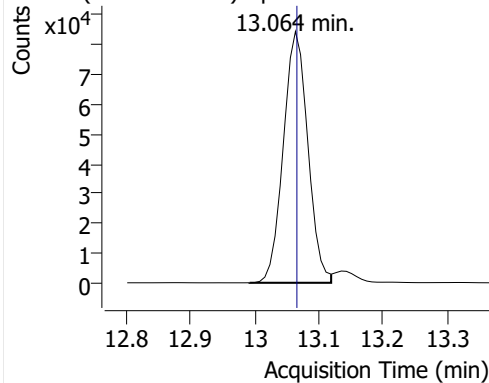


+ MRM (11.687-11.869 min) (299.0->**,219.0->69.0)

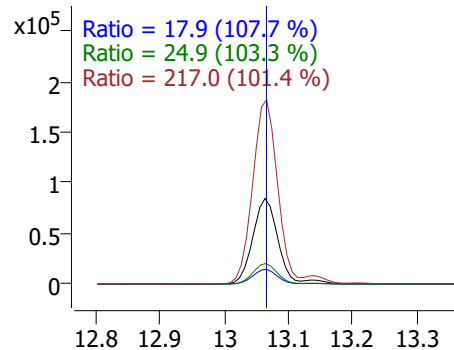


7:2sFTOH

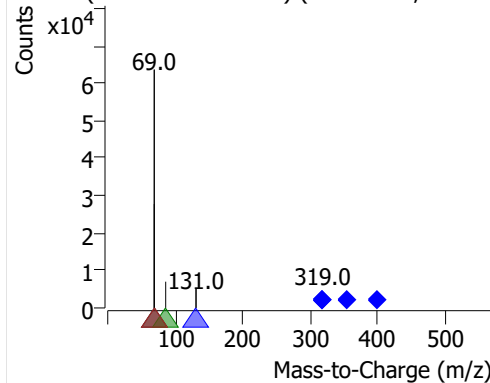
+ MRM (399.0 -> 69.0) tq122719.D



399.0 -> 69.0, 319.0 -> 131.0, 355.0 -> 86.0, 319.0 -> 69.0

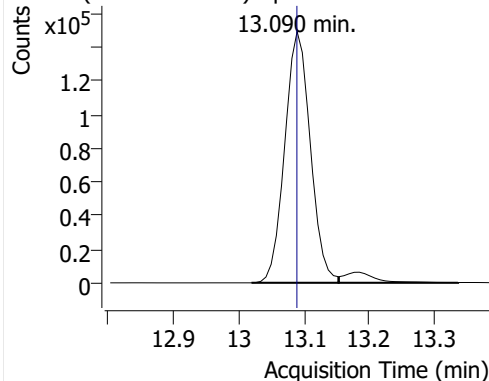


+ MRM (12.992-13.119 min) (399.0->**,319.0->69.0)

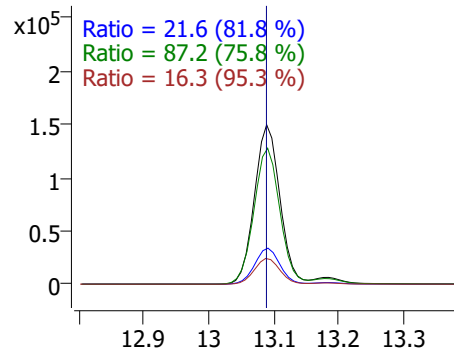


6:2 FTOH

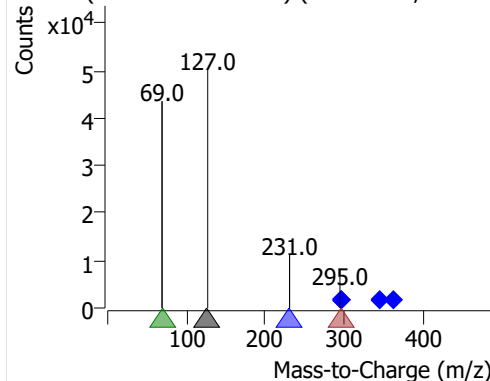
+ MRM (344.0 -> 127.0) tq122719.D



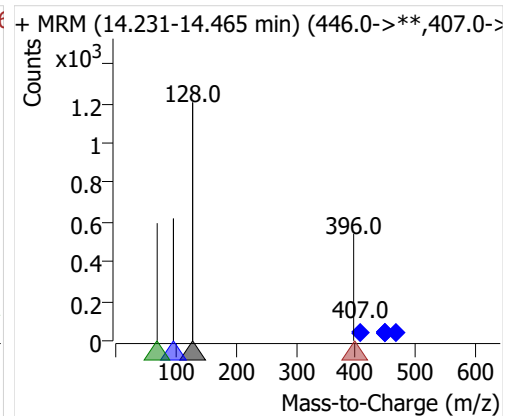
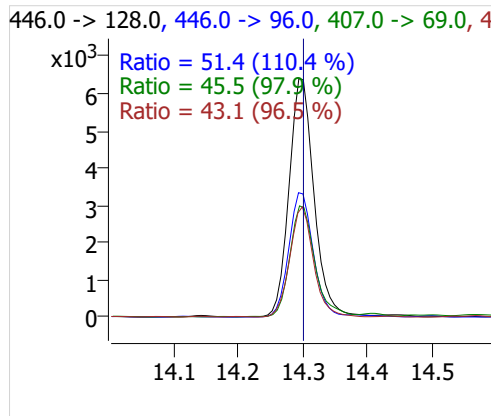
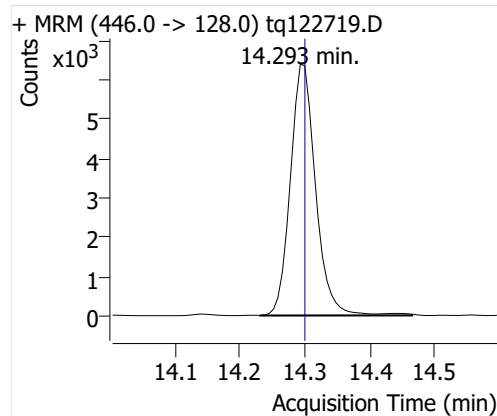
344.0 -> 127.0, 295.0 -> 231.0, 295.0 -> 69.0, 319.0 -> 131.0



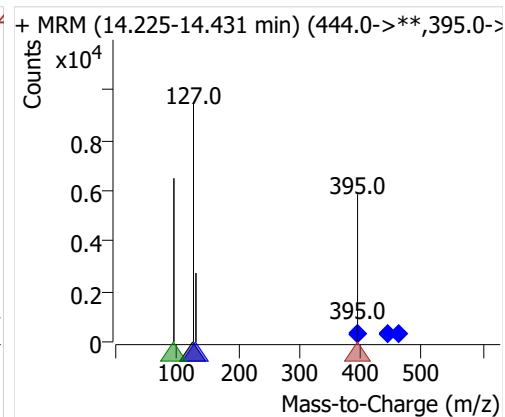
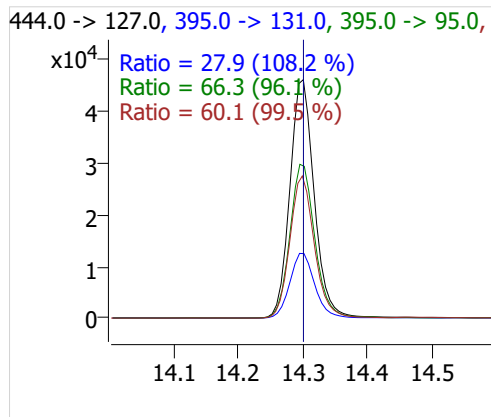
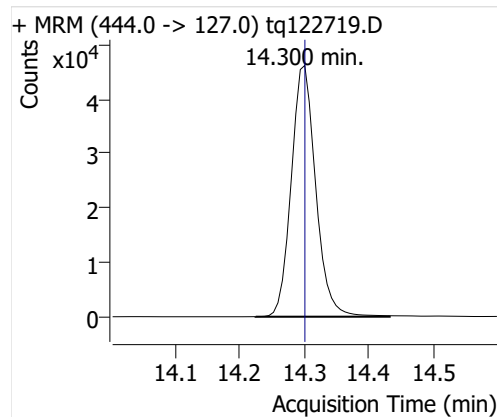
+ MRM (13.020-13.153 min) (344.0->**,295.0->127.0)



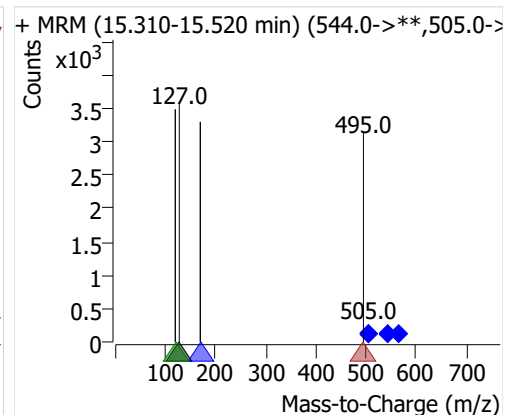
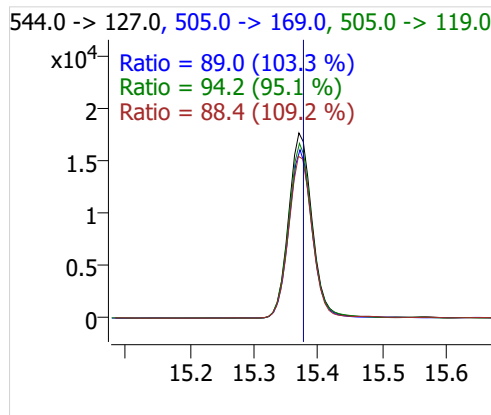
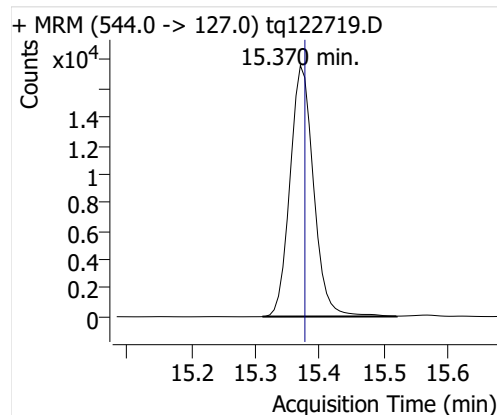
8:2 FTOH-C13



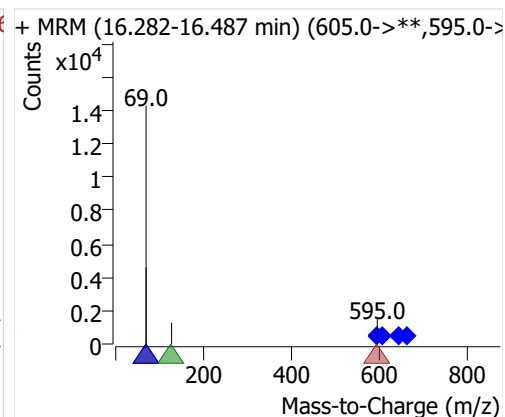
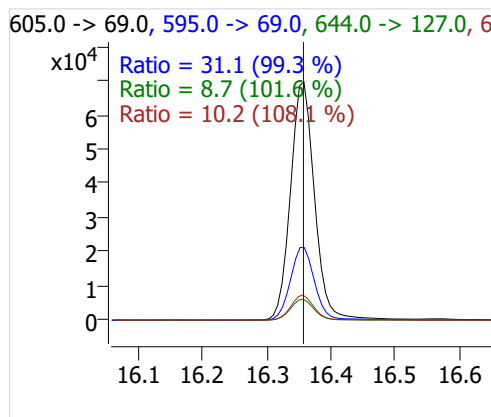
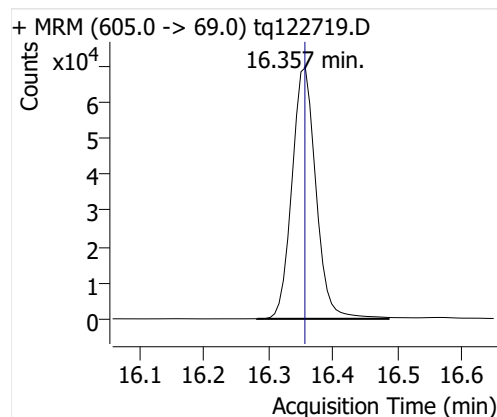
8:2 FTOH



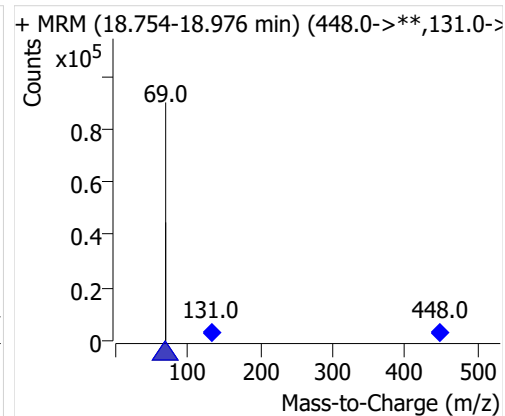
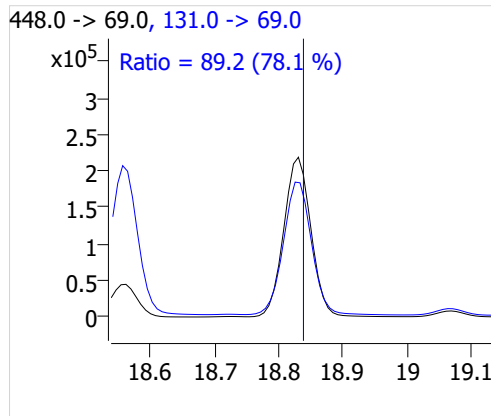
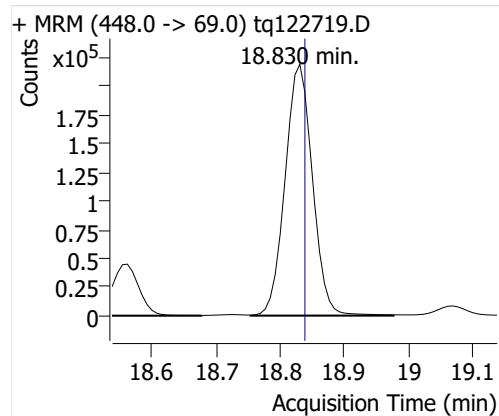
10:2 FTOH



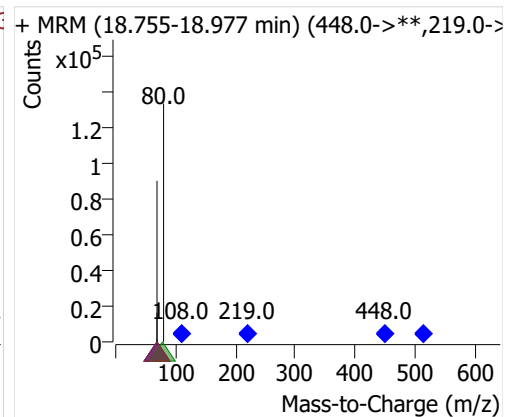
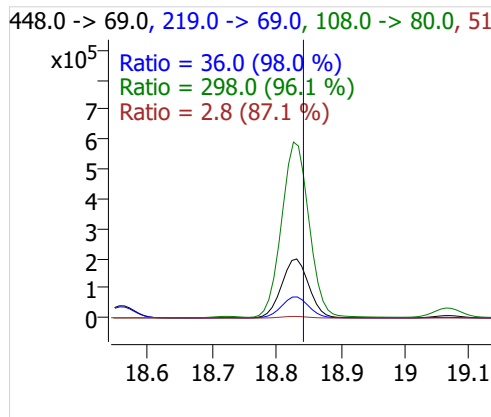
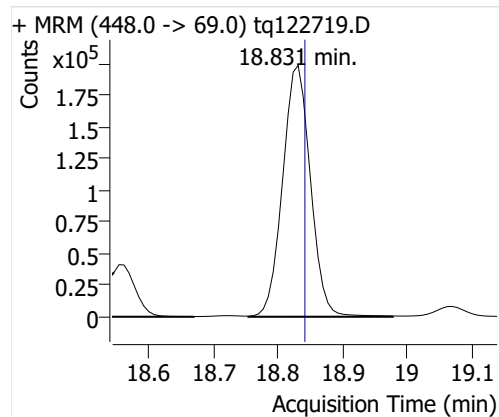
12:2 FTOH



NMeFOSA



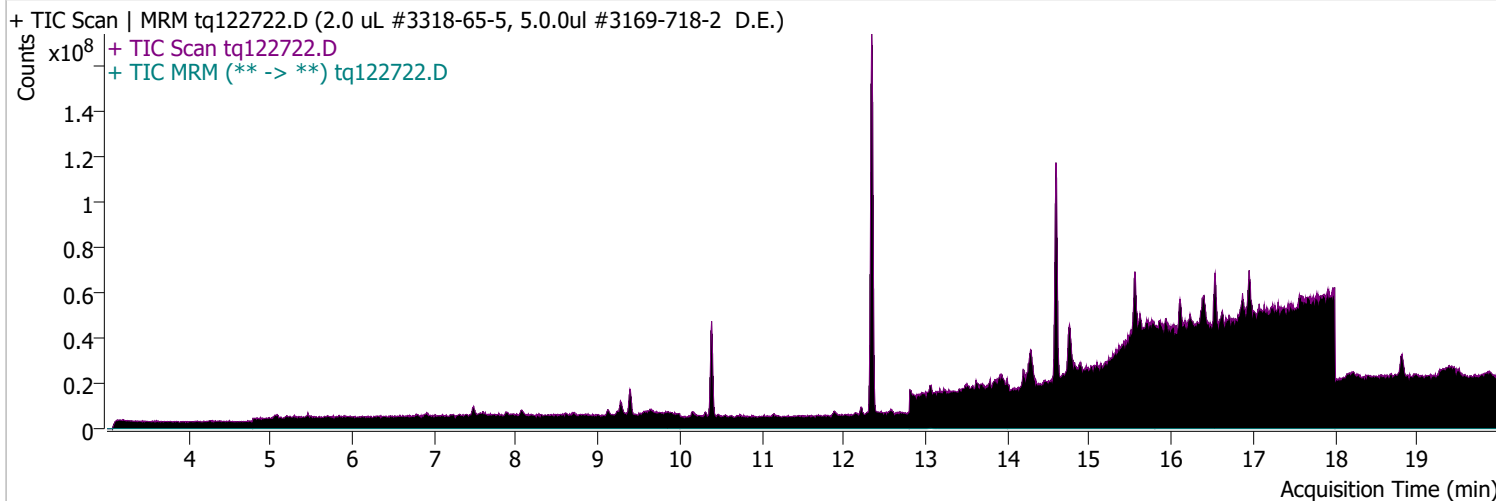
NEtFOSA



Quantitative Analysis Sample Report

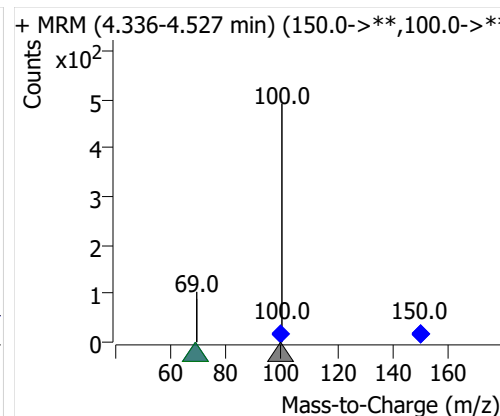
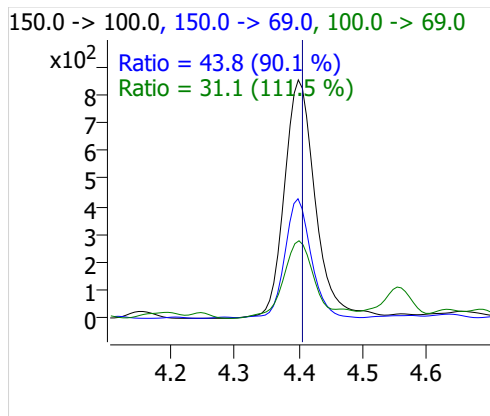
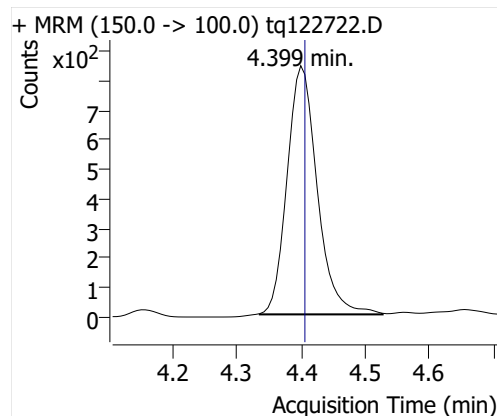
Batch Path D:\MassHunter\GCMS\1\data\27dec22a\QuantResults\tq22m1227a.batch.bin
 Analysis Time 1/3/2023 2:39 PM Analyst Name TAI\us32_usr_ins22923
 Report Time 1/5/2023 3:17:26 PM Reporter Name TAI\us32_usr_ins22923
 Last Calib Update 1/3/2023 2:39 PM Batch State Processed
 Quant Batch Version 10.1 Quant Report Version 10.1
 Acq. Time 12/28/2022 9:42 AM Data File tq122722.D
 Sample Type Sample Sample Name 2.0 uL #3318-65-5, 5.0.0ul #3169-718-2 D.E.
 Dilution 1 Acq. Method tq22m1209

Sample Chromatogram

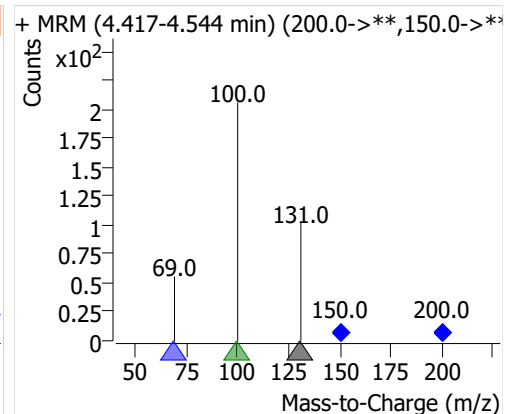
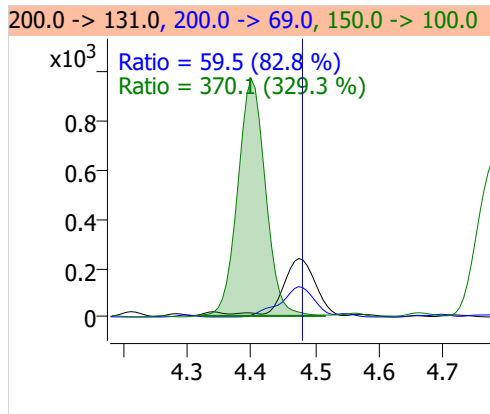
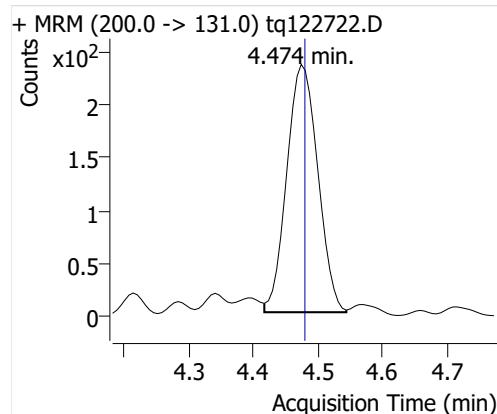


Compound	ISTD	RT	Resp.	ISTD Resp.	Resp. Ratio	Final Conc	Units
PFBA	6:2 FTOH-C13	4.399	2751	45228	0.0608	0.0182	ng
PFPeA	6:2 FTOH-C13	4.474	789	45228	0.0175	0.0059	ng
PFHxA	6:2 FTOH-C13	4.645	348	45228	0.0077	0.0056	ng
PFHpA	6:2 FTOH-C13	4.927	178	45228	0.0039	0.0042	ng
PFOA	6:2 FTOH-C13	5.348	715	45228	0.0158	0.0262	ng
4:2 FTOH	6:2 FTOH-C13	11.688	187	45228	0.0041	0.0088	ng
5:2sFTOH	6:2 FTOH-C13	11.675	56	45228	0.0012	0.0052	ng
7:2sFTOH	6:2 FTOH-C13	12.961	116	45228	0.0026	0.0050	ng
6:2 FTOH	6:2 FTOH-C13	13.089	1856	45228	0.0410	0.0448	ng
8:2 FTOH-C13	6:2 FTOH-C13	14.286	117	45228	0.0026	0.0067	ng
8:2 FTOH	6:2 FTOH-C13	14.293	247	45228	0.0055	0.0211	ng
10:2 FTOH	6:2 FTOH-C13	15.376	94	45228	0.0021	0.0190	ng
12:2 FTOH	6:2 FTOH-C13	16.357	519	45228	0.0115	0.0275	ng
NMeFOSA	6:2 FTOH-C13	18.830	740	45228	0.0164	0.0103	ng
NEtFOSA	6:2 FTOH-C13	18.831	654	45228	0.0145	0.0100	ng

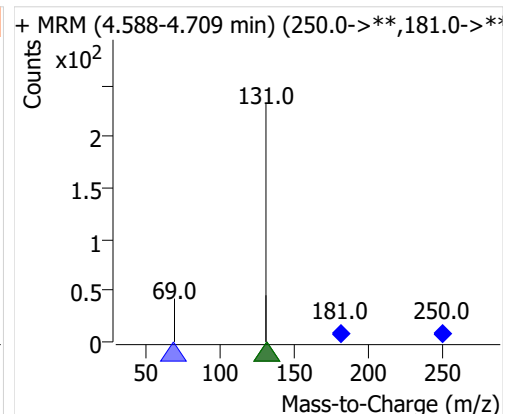
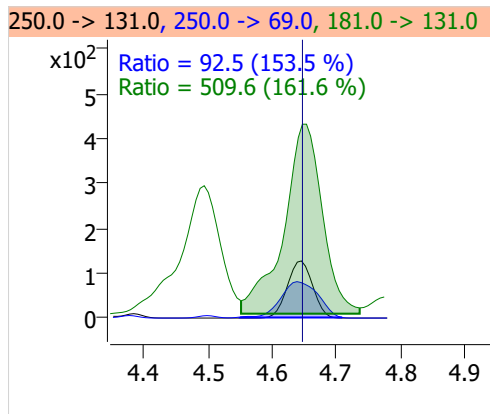
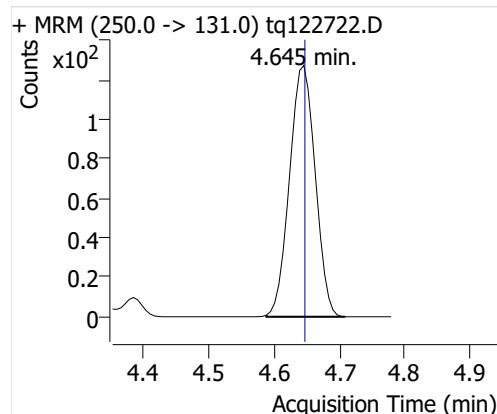
PFBA



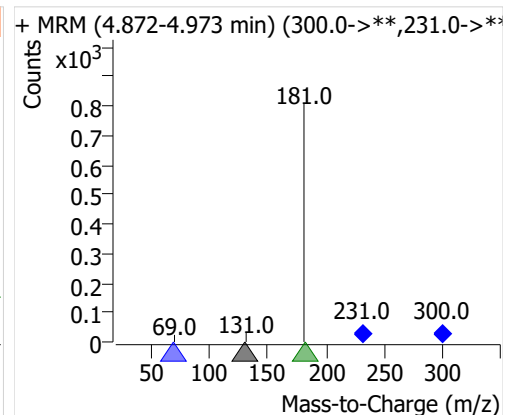
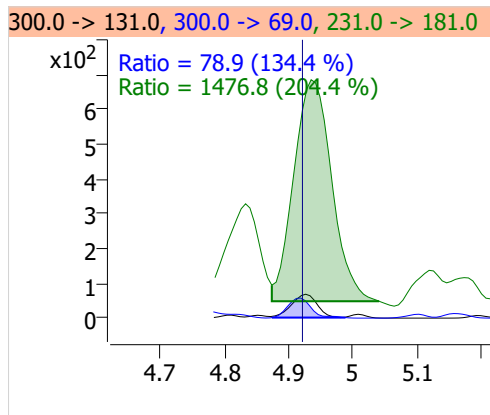
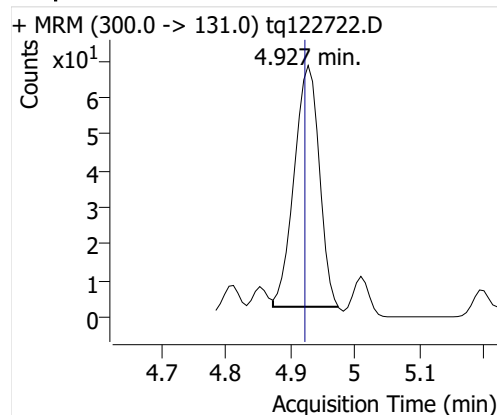
PFPeA



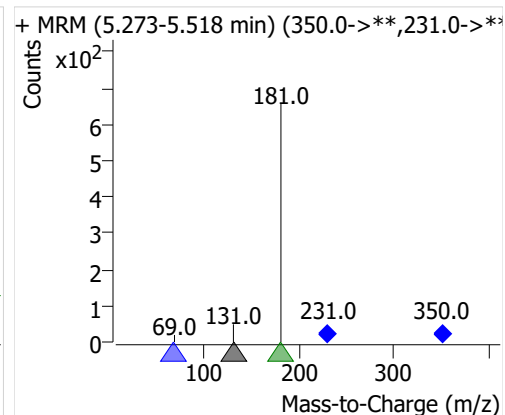
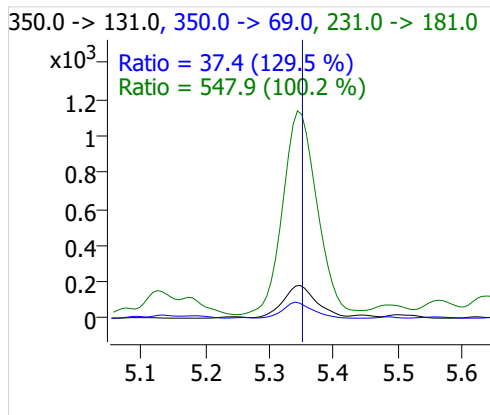
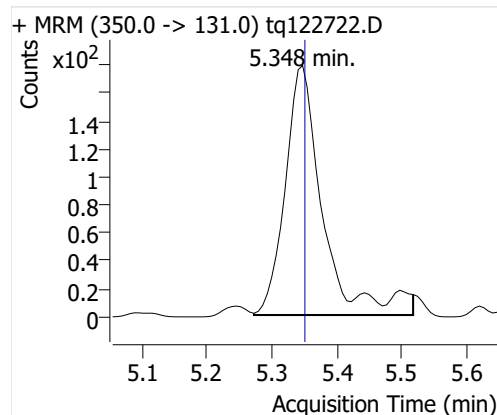
PFHxA



PFHpA

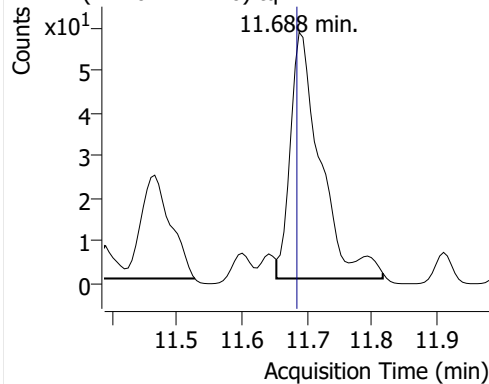


PFOA

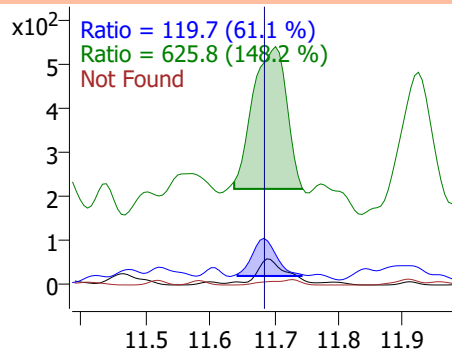


4:2 FTOH

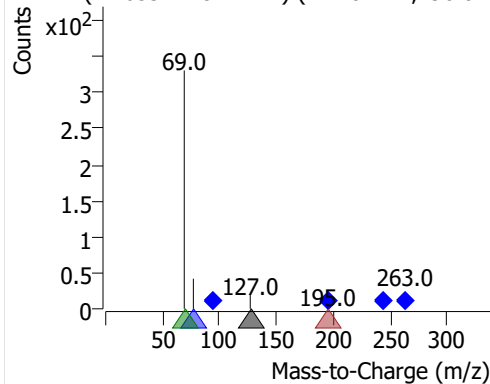
+ MRM (244.0 -> 127.0) tq122722.D



244.0 -> 127.0, 196.0 -> 77.0, 95.0 -> 69.0, 263.0 -> 127.0

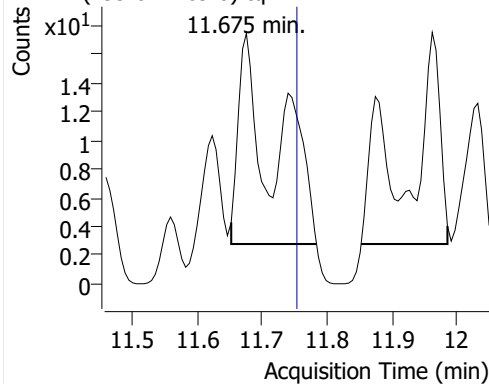


+ MRM (11.653-11.817 min) (244.0->**,196.0->**)

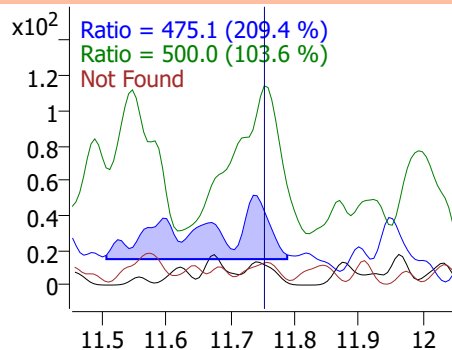


5:2sFTOH

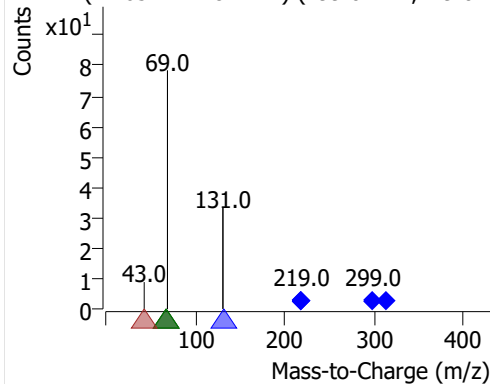
+ MRM (299.0 -> 69.0) tq122722.D



299.0 -> 69.0, 219.0 -> 131.0, 219.0 -> 69.0, 319.0 -> 131.0

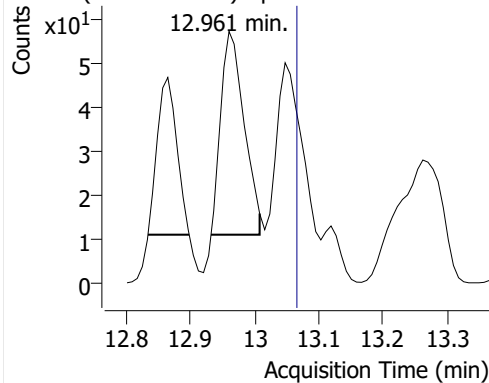


+ MRM (11.652-11.784 min) (299.0->**,219.0->*)

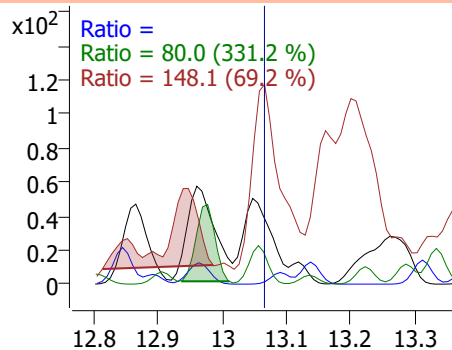


7:2sFTOH

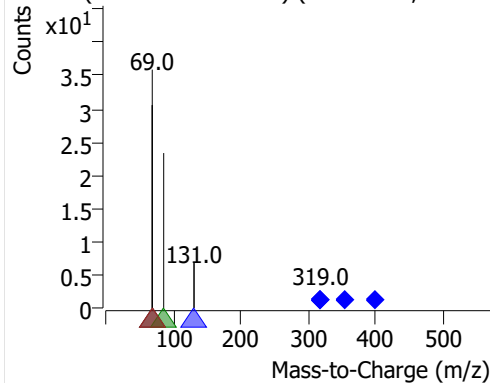
+ MRM (399.0 -> 69.0) tq122722.D



399.0 -> 69.0, 319.0 -> 131.0, 355.0 -> 86.0, 319.0 -> 69.0

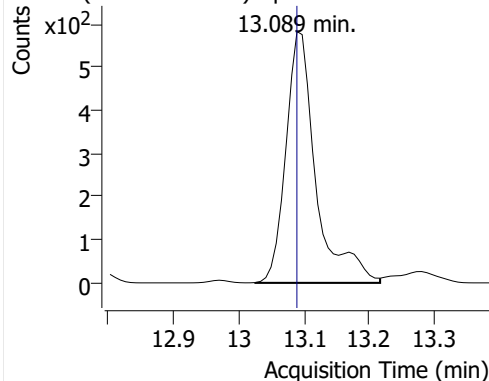


+ MRM (12.933-13.008 min) (399.0->**,319.0->*)

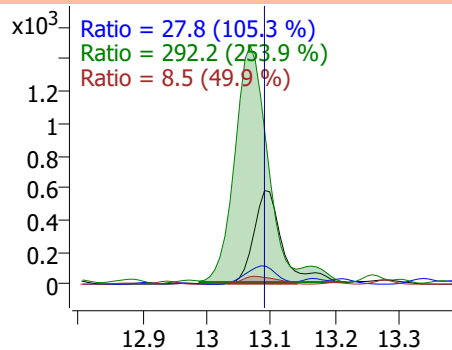


6:2 FTOH

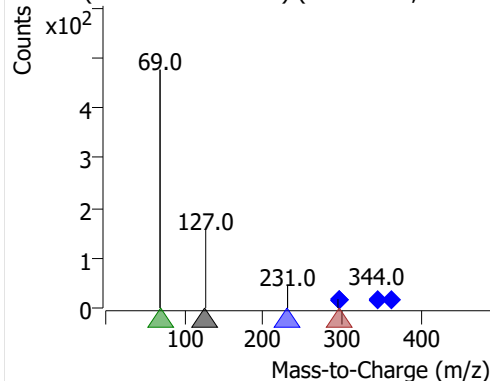
+ MRM (344.0 -> 127.0) tq122722.D



344.0 -> 127.0, 295.0 -> 231.0, 295.0 -> 69.0, 344.0 -> 127.0

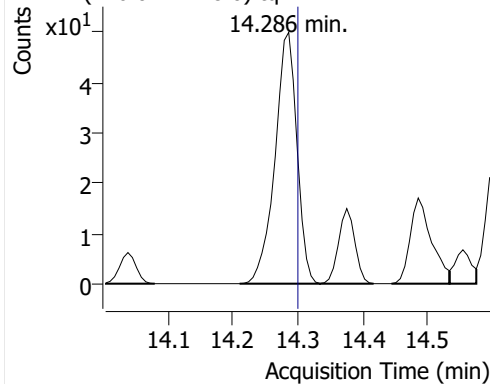


+ MRM (13.026-13.216 min) (344.0->**,295.0->*)

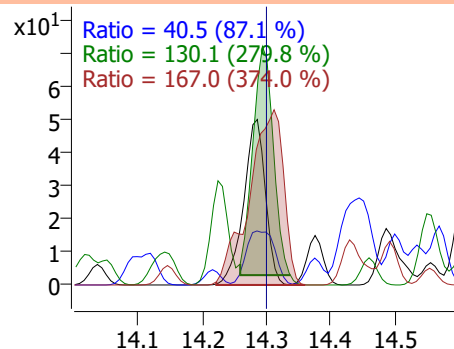


8:2 FTOH-C13

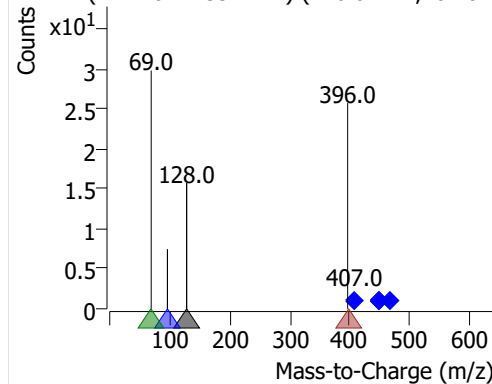
+ MRM (446.0 -> 128.0) tq122722.D



446.0 -> 128.0, 446.0 -> 96.0, 407.0 -> 69.0, 407.0 -> 128.0

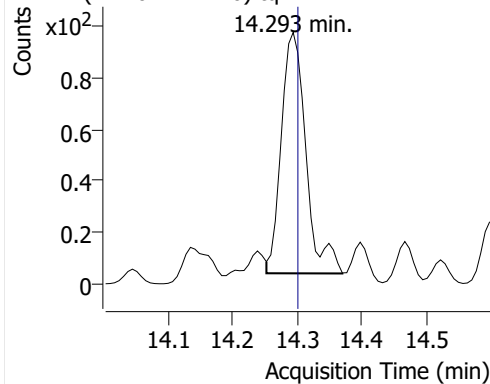


+ MRM (14.210-14.334 min) (446.0->**,407.0->**)

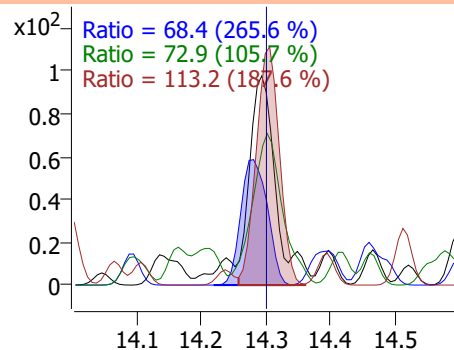


8:2 FTOH

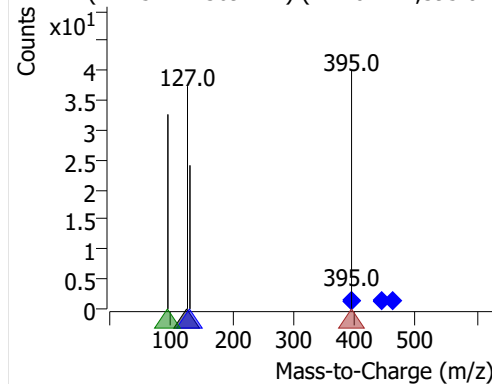
+ MRM (444.0 -> 127.0) tq122722.D



444.0 -> 127.0, 395.0 -> 131.0, 395.0 -> 95.0, 395.0 -> 127.0

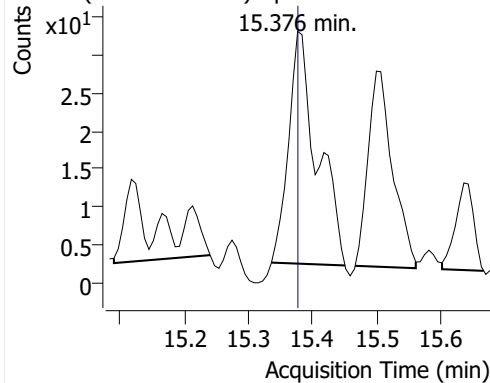


+ MRM (14.252-14.369 min) (444.0->**,395.0->**)

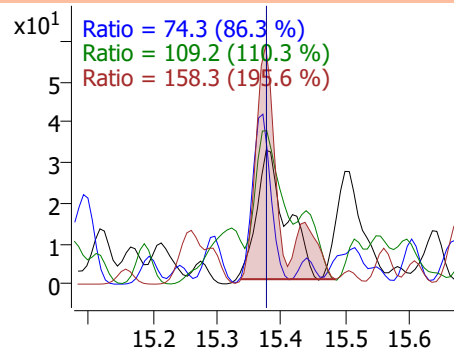


10:2 FTOH

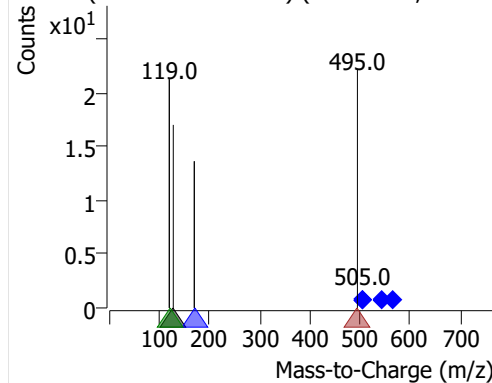
+ MRM (544.0 -> 127.0) tq122722.D



544.0 -> 127.0, 505.0 -> 169.0, 505.0 -> 119.0, 505.0 -> 127.0

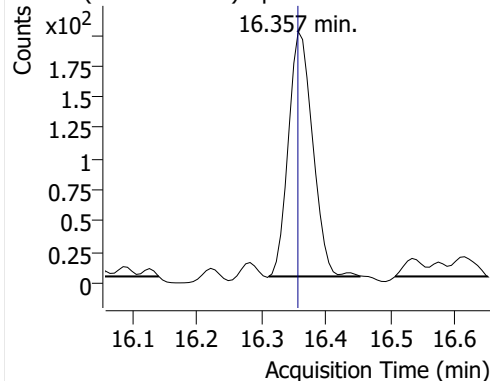


+ MRM (15.335-15.450 min) (544.0->**,505.0->**)

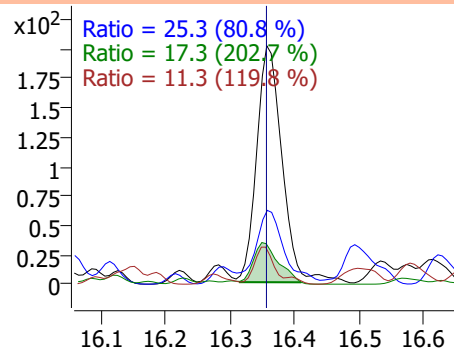


12:2 FTOH

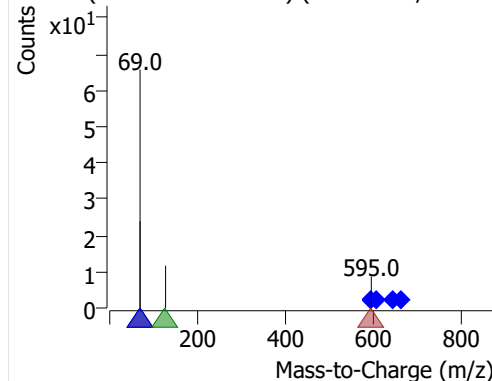
+ MRM (605.0 -> 69.0) tq122722.D



605.0 -> 69.0, 595.0 -> 69.0, 644.0 -> 127.0, 644.0 -> 69.0

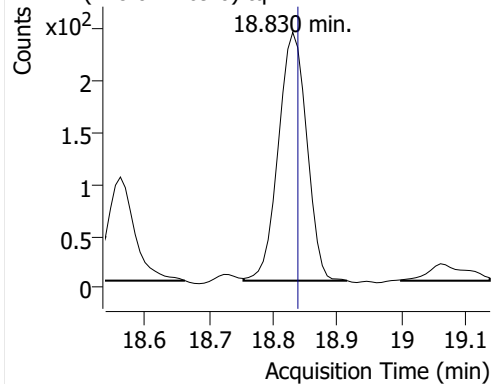


+ MRM (16.311-16.452 min) (605.0->**,595.0->**)

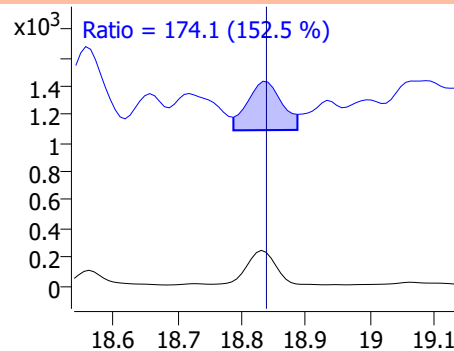


NMeFOSA

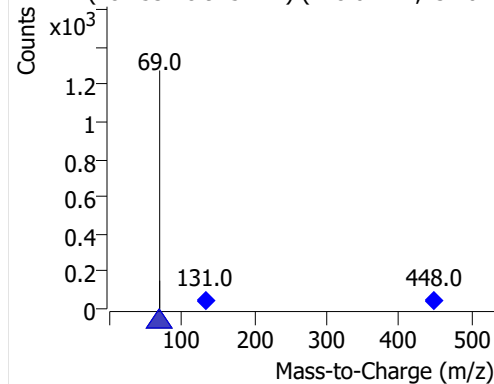
+ MRM (448.0 -> 69.0) tq122722.D



448.0 -> 69.0, 131.0 -> 69.0

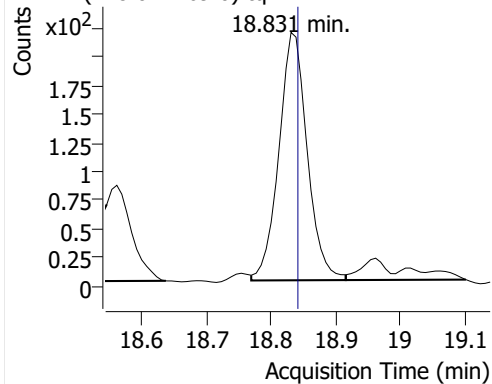


+ MRM (18.753-18.915 min) (448.0->**,131.0->

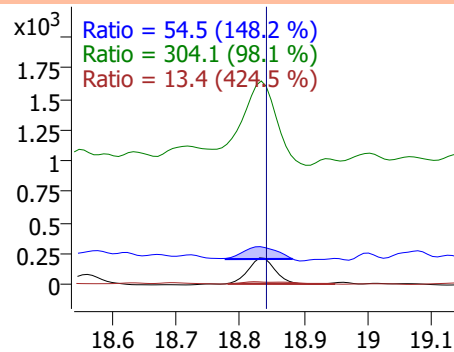


NEtFOSA

+ MRM (448.0 -> 69.0) tq122722.D



448.0 -> 69.0, 219.0 -> 69.0, 108.0 -> 80.0, 51.0



+ MRM (18.770-18.915 min) (448.0->**,219.0->

